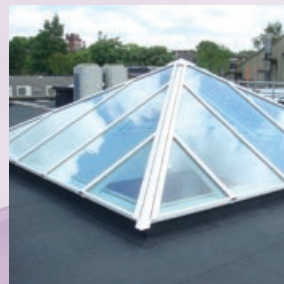


more choice, better prices.







The UK's Leading Supplier of Rooflights, Skylights and Smoke Vents.

The National Domelight Company

The National Domelight Company are specialist suppliers of domelights, rooflights, skylights and smoke vents, to roofing contractors and builders, to developers of commercial and residential property, and to private homeowners.

Our family-run company has been successfully trading for over 30 years and our UK-based sales team has more than 100 years of rooflight and skylight knowledge between them. You can trust us to know what we are talking about and to give you the best advice and guidance to find the right rooflight for you.

Why choose the National Domelight Company?

• Widest choice

We are the UK's leading supplier of rooflights and as a result we can supply you with any size, shape and material of rooflight, and with any combination of upstands and accessories, that you will ever need – *and all at the best trade prices.*

• No more waiting

We deliver a first class service and our large warehouse and stocks mean that you won't have to wait long for your order. We can deliver most stock units, direct to site, within 72 hours. Our **FREE nationwide delivery** service means your rooflight will be safely delivered at your convenience – just when you need it.

• Best quality

Our prices are competitive yet we still deliver industry leading quality and service in everything we do. Guaranteed.

• Dedicated support

We have been supplying the roofing industry for decades and to help you we provide useful resources at www.nationaldomes.com and CAD downloads to incorporate into your digital plans. Just call our **Technical Support Team on 01276 451555** for practical advice and support, no matter what you need.

Don't just take our word for it – Put us to the test, let us quote your next job and see just how much you could save! We guarantee excellent products, at sensible prices.

Our guarantee of quality

All rooflights and skylights supplied by The National Domelight Company have been fully tested before they are added to our portfolio. This ensures you can always rely on our industry leading quality no matter what your requirement.

Protecting the environment

The National Domelight Company is fully aware of the effects that the construction industry can have on the environment. We work hard to ensure that our business, sourcing and logistics processes have a minimal effect on the environment, and that our products have a reasonable lifespan and can be recycled wherever possible.

Why we need natural light

There is no denying that natural daylight in a room can make all the difference to its occupants. Rooflights are the best way of introducing natural light and can provide up to three times more daylight than an equally-sized vertical window. People work better in naturally lit workspaces and natural lighting can have less of an environmental impact than artificial lighting.

The National Domelight Company can advise on specific industry policies and regulations, and give guidance on introducing natural light into buildings.

more choice, better prices.

Contents Overview



6

Measuring Guide/ Technical Services

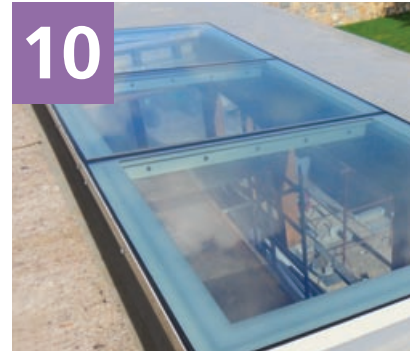
See our *Measuring Guide* checklist for the easy way to choose the right rooflights for your project.



8

Flat Fixed Rooflights

Guaranteed to look good in any setting. They provide the end-user with high daylight levels and sealed double-glazing housed in an aluminium frame, which adds to the superior thermal performance.



10

Multi-Part and Bespoke Rooflights

For those jobs that require a large expanse of glass, and still need to look good, Astrogaze is also available as a multi-part system.



15

Electric-Hinged Rooflights

The perfect way to control ventilation where a manual system might not be practical.



16

Pyramid Rooflights

Stylish, yet practical, rooflight solutions for a variety of spaces. These units will brighten up any educational, commercial or retail, property with natural light.



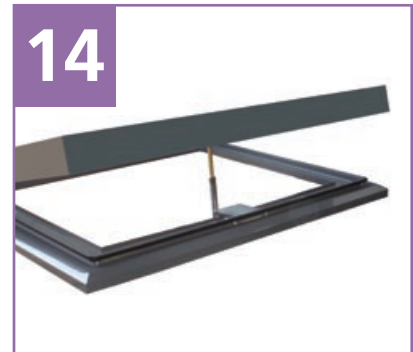
12 Walk-On Rooflights

The perfect solution for roof terraces, or similar roofing areas, where there are likely to be pedestrians. The unit has been specifically designed for strength while still providing high levels of natural daylight.



13 Access Hatches

Access Hatch rooflights are available in both manual and electric variants designed with security in mind.



14 Manual-Hinged Rooflights

A Manual Hinged rooflight provides the perfect way to manually control ventilation in the space below.



17 Ridgelights

Ridgelights are a great way to bring daylight to indoor spaces. They are available with spans from 0.6m to 7.0m and in unlimited lengths.



18 Northlights & Monopitch

Specifically designed to maximise the natural daylight. Suitable for vertical to 60° sloping faces with glazing or cladding tailored to suit.



19 Barrel Vaults

Available in a choice of low-rise and high-rise profiles and are perfect for all types of commercial, residential and industrial building. This highly adaptable unit can be installed on a range of roofing constructions.

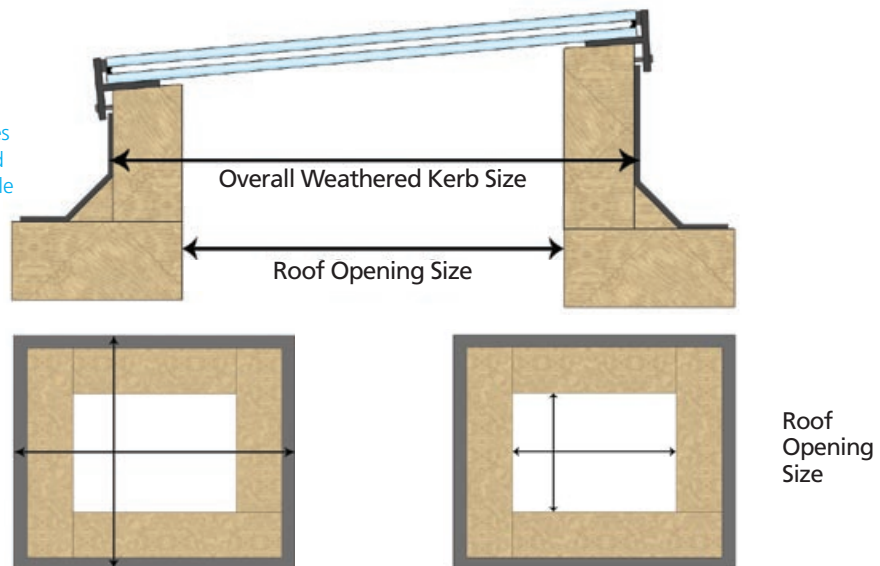
Measuring Guide



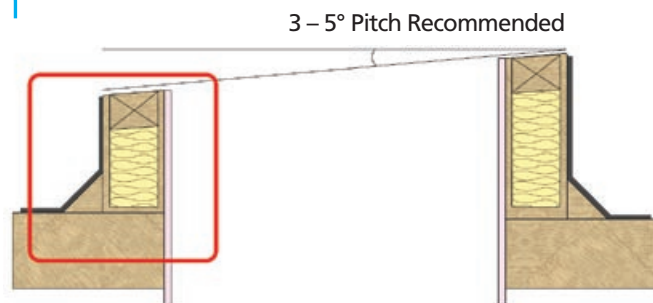
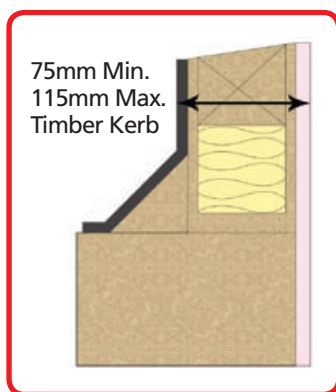
We recommend you use the following measuring guide to assist you in working out the correct measurements for your rooflight. The National Domelight team will be happy to help you apply the results to a full specification.

1 Size

Please contact us for specific measuring guides for all products not listed below. These are available from us and can be tailored to suit your specific product and size requirements.



2 Kerb Construction



Builders kerb construction for flat glass rooflights including: Flat Fixed, Multi-Part, Walk-On*, Access Hatch, Manual Hinged and Electric Hinged. Please Note – A recommended pitch for flat glass rooflights is between 3 – 5° to aid water runoff and help prevent water ponding on the glazing.

*For walk on rooflights a 1° pitch is recommended.

Technical Services

The National Domelight Company sales team is always available to assist you, from your initial enquiry through to after sales support. This includes help with specification writing, site surveys, budget costings, and fully detailed quotations.

Health & Safety

(HSE) Health and Safety in Roof Work states that where rooflights are required, designers should consider:

- Specifying rooflights that are non-fragile
- Fitting rooflights designed to project above the plane of the roof and which cannot be walked on (these reduce the risk but they should be capable of withstanding a person falling onto them)
- Protecting rooflight, e.g. by means of mesh or grids fitted below or above the rooflight
- Specifying rooflights with a design life that matches that of the roof, taking account of the likely deterioration due to ultraviolet exposure, environmental pollution and internal and external building environment

Man Safe

Man-safe is a term often used within the construction industry to mean that the product can withstand foot traffic. However, man-safe has no recognised definition and 'non-fragile' does not qualify a product to be used as a thoroughfare. Whilst glazing and other accessories may be designed to safely resist the impact of a human body falling against it, the wilful act of walking on any kind of roof glazing must be forbidden at all times.

The act of walking upon a glazed structure can cause microscopic damage that, in time, may have a detrimental effect upon the impact performance of the system. Walking upon glazing may encourage a practice that could lead to general disregard for the rating of said glazing, with catastrophic consequences.

Handling & Storage

While all Astroglaze rooflights and associated products are suitably packaged to avoid damage care should be exercised when handling. For moving larger items, two or more people may be needed. All products should be stored flat at all times in dry conditions until installation.



Condensation

Condensation occurs where warm moist air meets cold surfaces. As warm air rises, the risk of condensation forming at rooflight level is relatively greater than at a lower level. The risk can be minimised by specifying ventilated rooflights. However, because temperature and humidity levels are clearly beyond our control, no guarantee can be given against the formation of condensation. Condensation can also occur when the room below has high humidity levels, for example during construction from new plaster or paintwork. However, once the humidity level in the room is restored to normal this condensation dissipates.

Installation

Most Astroglaze rooflights are supplied ready assembled however some larger units may require on site assembly. All rooflights will be supplied pre drilled complete with security screw bolts and factory applied gaskets where applicable. Astroglaze rooflights are delivered to site in protective packaging. Full instructions and fixings are included with all products, and should be carefully studied prior to installation.

Guarantees

All Astroglaze rooflights, when installed on kerbs in accordance with manufacturer's instructions, are guaranteed against the effects of defective design, materials or construction for a period of five years from date of supply by National Domelight Company. Astroglaze rooflights have an expected life of at least 25 years, which would normally exceed the life of the roof waterproofing materials. All other items such as kerbs, ventilation systems, electrical components and other accessories are guaranteed for 12 months from date of supply by National Domelight Company.

Flat Fixed Rooflights

Astroglaze rooflights are guaranteed to look good in any setting. They provide the end-user with high daylight levels and sealed double-glazing, housed in an aluminium frame, which adds to the superior thermal performance.

These easy-to-install units come in a choice of 3 polyester powder coated colours:

- **White RAL: 9010**
- **Slate Grey RAL: 7015**
- **Jet Black RAL: 9005**

Other RAL colours are available.

Key Features

- U-values as low as 1.4 W/m²k
- Toughened outer panes, low-E laminated inner panes and Argon filled cavities
- Available in a standard range of double or triple glazed units, in square, rectangular and circular configurations
- Outstanding aesthetics - inside and out
- Non-fragile, CWCT compliant construction
- In addition to the standard glazing specification as listed, glazing can be specified as: tinted; solar control; dirt resistant; obscured; toughened inner glazing panes; as well as a wide range of other options

All Astroglaze flat fixed rooflights can also be supplied with a 300mm vertical PVC upstand if required. **Please contact the National Domelight Company for further information.**

Shapes

Astroglaze Flat Fixed rooflights can be supplied in a variety of popular shapes, including;

- Square • Rectangular • Circular • Elliptical • Triangular
- Hexagonal • Octagonal • Trapezoidal • Irregular shapes

Sizes

Astroglaze rooflights can be supplied in a wide range of sizes and configurations. Maximum standard sizes for rooflights using a single glazing panel are:

- 2.2m x 2.2m square
- 1.6m x 3.0m rectangular
- 2.3m diameter circular/elliptical

For more advice, please call our **Technical Support Team on 01276 451555.**

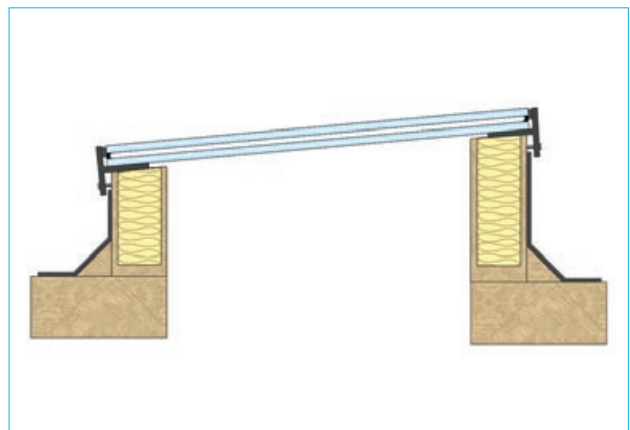
Astroglaze Flat Fixed Rooflight Benefits

Standard Glass Specification

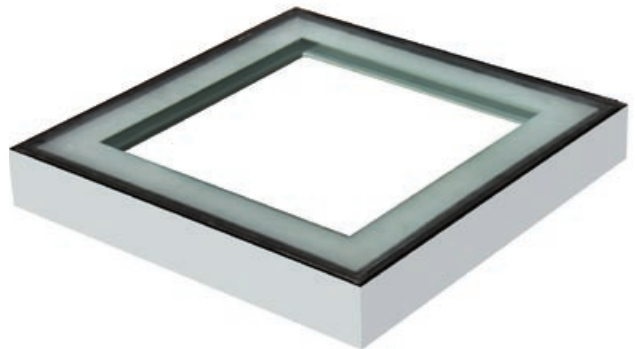
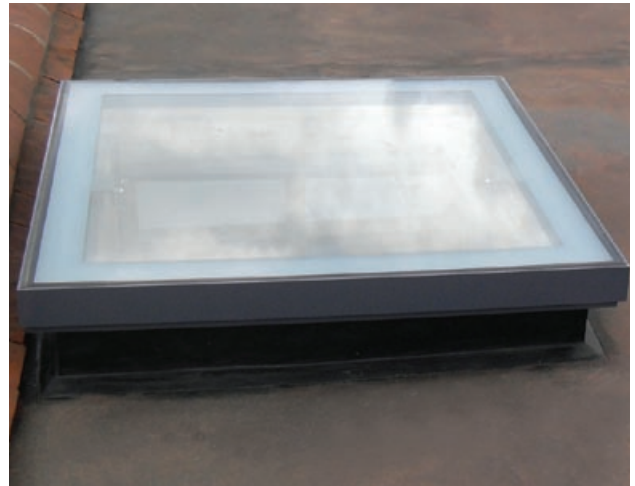
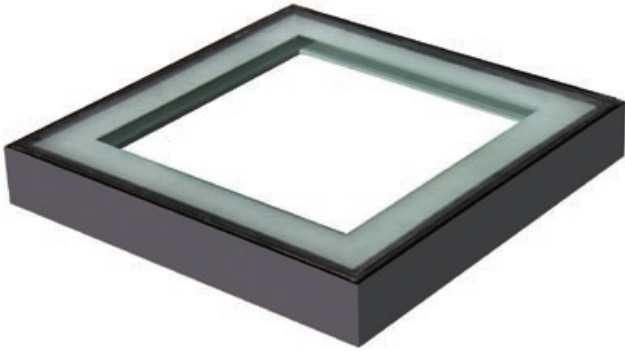
- We make sure that the finished rooflight will always look neat and aesthetically pleasing when installed
- Our standard glazing is clear but comes with a sandblasted margin which, on installation, hides the top of the kerb, and any roofing material edges, from anyone viewing from above or below the unit. The sandblasting is available in a variety of sizes but can be tailored to suit your specific needs

Other Glass Options

- Other glazing options are available, including solar control glass, tinted glass and fully sandblasted glass
- The glass roof lights are supplied with a 30.8mm thick double glazed glass unit as standard which comprises a 6mm toughened outer pane, 18mm Argon filled cavity, and a 6.8mm low-E laminated inner pane
- For those who require higher U-Values, Astroglaze can also be supplied triple glazed. Triple glazed elements are 50.8mm thick: with 6mm toughened outer, 16mm Argon-filled cavity and 6mm toughened middle, 16mm Argon-filled cavity and 6.8mm low-E laminated inner



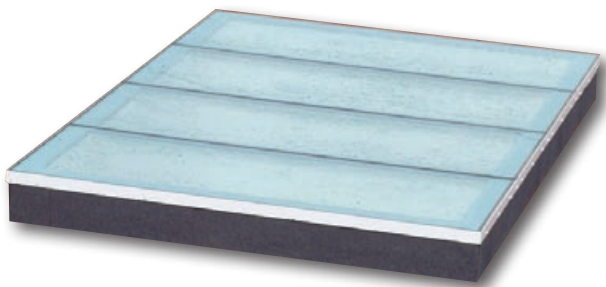
Standard Flat Fixed unit on builders kerb



Multi-Part and Bespoke

For those jobs that require a large expanse of glass, and still need to look good, Astroglaze is also available as a multi-part system. The rooflight is supplied in smaller sections for easy construction on site.

During assembly the Astroglaze unit is supported until the joints between the panes are secured with a silicone sealant. The finished rooflight sits firmly on the builder's kerb in the usual way. Our multi-part glass rooflights provide a great way to glaze large areas and they come in either a grey, black or white polyester powder coating (see single units).

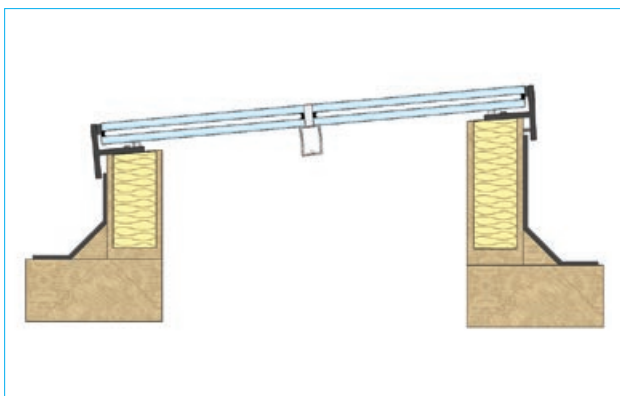


Maximum spans up to 5m can be accommodated. There is no limit on the length of the rooflight. Bay centres depend on span width. All outer panes have sandblasted borders for improved aesthetics.

In addition to the standard glazing specification as listed, glazing can be specified as:

• Tinted • Solar Control • Dirt resistant • Obscured • Toughened inner glazing panes, as well as a wide range of other options – please contact our sales office for more details.

Glazing elements are contained within a thermally enhanced, welded aluminium frame, for installation to a builders' kerb.



Standard 2 piece Multi-Part unit on builders kerb

Astroglaze Multi-Part and Bespoke Rooflight Benefits

Standard Glass Specification

Double glazed units:

- 6/8mm clear toughened outer
- 16/18mm Argon filled cavity
- 6.8/8.8mm low-E laminated inner

Triple glazed units:

- 6mm clear toughened outer
- 16mm Argon filled cavity
- 6mm toughened middle
- 16mm Argon filled cavity
- 6.8mm low-E laminated inner

Frame Finish

- All units feature sealed double glazed units contained within a thermally enhanced aluminium frame, which is available in 3 polyester powder coated colours as standard: White RAL: 9010, Slate Grey RAL: 7015, Jet Black RAL: 9005. Other RAL colours are available. Please contact us for further information

Insulated Upstand

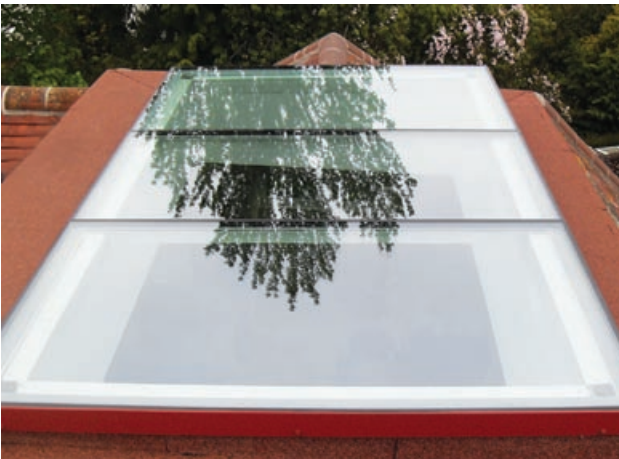
- If required, Astroglaze rooflights can be supplied complete with a vertical insulated upstand in a range of standard sizes

Thermal Insulation

- Total product U-values for double glazed multipart rooflights are as low as 1.4 W/m²k, exceeding the requirement for Part L compliance. Triple glazed units achieve total product U-values as low as 1.2 W/m²k
- U-value calculations can be supplied for specific rooflight configurations

Wall abutment

- Astroglaze rooflights can be designed to accommodate wall abutment on up to three sides if required. This is particularly useful if a rooflight is required to be installed in a small roof area or tight space



Walk-On



The Astroglaze Walk-On rooflight is the perfect solution for roof terraces, or similar roofing areas, where there are likely to be pedestrians. The unit has been specifically designed for strength while still providing high levels of natural daylight.

When installed with a standard timber kerb, and with paving or decking fitted flush with the glazing, the unit is watertight and helps to ensure against trip hazards.

Astroglaze Walk-On rooflights are also available in larger sizes, which would be constructed as a multi-part unit – particularly useful for large roof terraces where longer runs are required.

Standard Glass Specification

- 49.5mm double glazed unit comprising 25.5 mm outer pane, 18mm argon filled cavity and 6mm low-E laminated inner pane

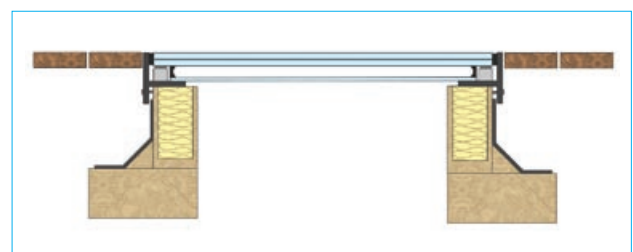


Sizes

Available in square and rectangular shapes up to a maximum area of:

- 3m²
- 1.7m x 1.7m
- Circular units up to 2m diameter

For more advice, please call our **Technical Support Team** on **01276 451555**.



Standard Walk-On unit on builders kerb

Access Hatches



Astroglaze Access Hatch rooflights are available in both manual and electric variants in square and rectangular sizes to suit new or existing kerbs. Astroglaze Access Hatch rooflights are designed with security in mind. They come with a lockable handle (similar to those on double-glazed windows) which can only be secured from the inside.

The unit comes with gas-assisted supports that allow it to be easily opened to 80° and keep it open to allow for safe and easy passage.

All units feature sealed double glazed units contained within a thermally enhanced aluminium frame, which is available in 3 polyester powder coated colours as standard:

- **White RAL: 9910**
- **Slate Grey RAL: 7015**
- **Jet Black RAL: 9005**

Other RAL colours are available.



Sizes

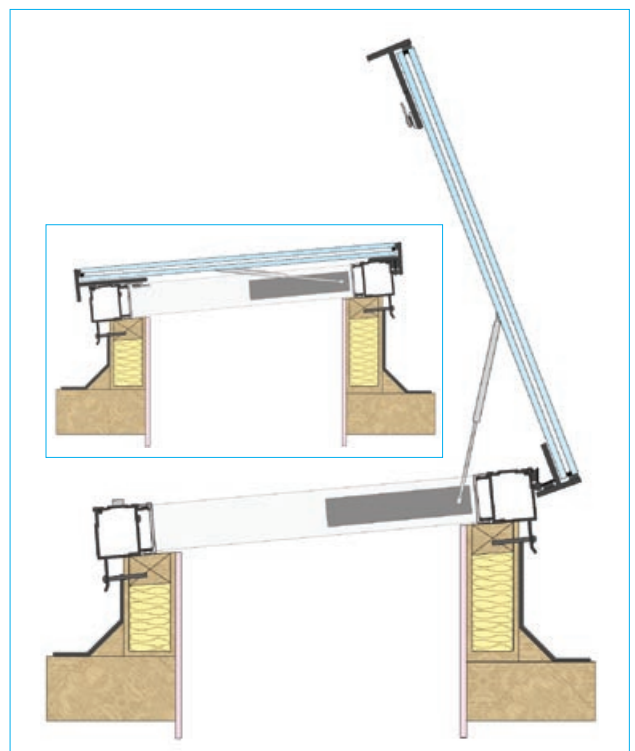
Astroglaze Access Hatch rooflights are available from:

- A minimum size of 780mm x 780mm (external weathered kerb dimensions)
- Up to a maximum size of 1380mm x 1380mm (external weathered kerb dimensions)

For more advice, please call our **Technical Support Team on 01276 451555**.

Standard Glass Specification

- 30.8mm thick double glazed unit comprising a 6mm toughened outer pane, 18mm Argon filled cavity and a 6.8mm low-E laminated inner pane



Standard Access Hatch unit on builders kerb (open). Inset shows the unit closed.

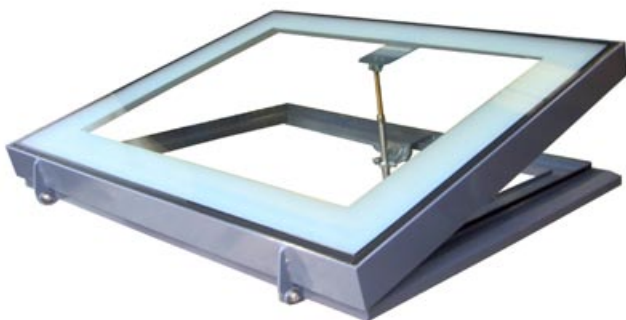
Manual Hinged



The Astroglaze Manual Hinged rooflight provides the perfect way to control ventilation in a space and is particularly well-suited for kitchens and areas with high humidity levels. The unit is operated with a manual spindle and comes with a portable winding rod.

Astroglaze Manual Hinged rooflights consist of an aluminium frame and sealed double-glazing which is constructed to enhance thermal performance.

For more advice, please call our *Technical Support Team on 01276 451555*.



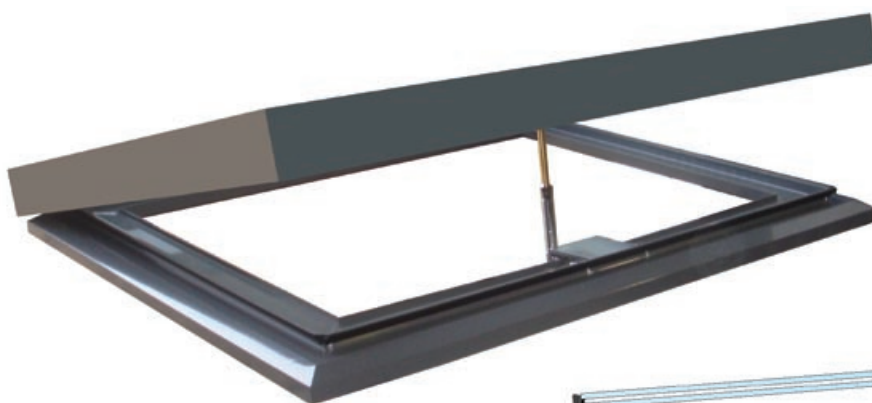
Astroglaze Manual Hinged Rooflight Benefits

Standard Glass Specification

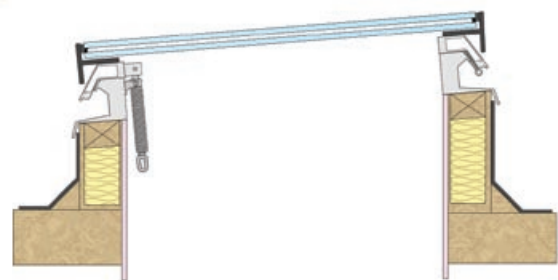
- Standard glass specification: 30.8mm thick double glazed unit comprising a 6mm toughened outer pane, 18mm Argon filled cavity and a 6.8mm low-E laminated inner pane

Frame Finish

- All units feature sealed double glazed units contained within a thermally enhanced aluminium frame, which is available in 3 polyester powder coated colours as standard: White RAL: 9010, Slate Grey RAL: 7015, Jet Black RAL: 9005. Other RAL colours are available. Please contact us for further information



Portable winding rod available in 1.5m, 2m and 3m lengths



Standard Manual Hinged unit on builders kerb (closed)

Electric Hinged



The Astroglaze Electric Hinged rooflight provides the perfect way to control ventilation in a space with high ceilings where a manual system might not be practical. For easy operation the unit comes with a 230v AC, 300mm stroke chain link actuator which controls the rooflight. It is particularly well-suited for kitchens and areas with high humidity levels.

Astroglaze Electric Hinged rooflights consist of an aluminium frame and sealed double-glazing which is constructed to enhance thermal performance. The Astroglaze Electric Hinged rooflight is also available with concealed actuators for those looking for a more minimalistic design. These easy-to-install units come in a choice of 3 polyester powder coated colours:

- **White RAL: 9910** • **Slate Grey RAL: 7015**
- **Jet Black RAL: 9005**

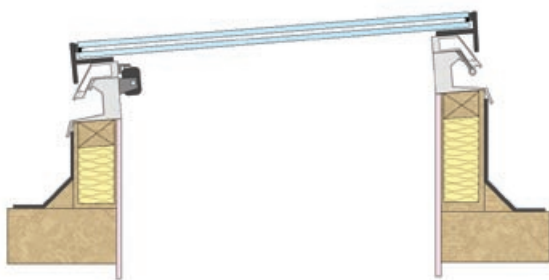
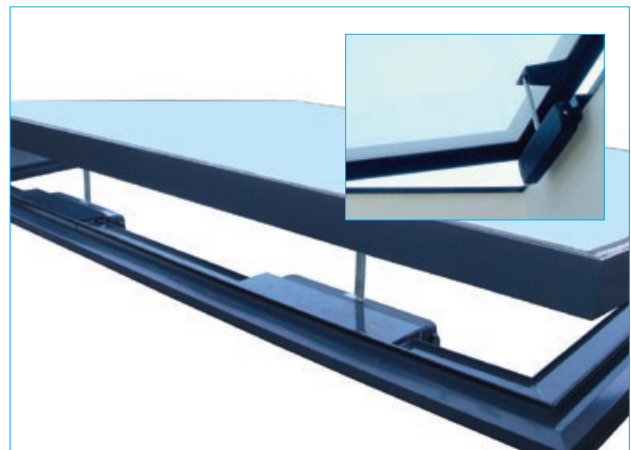
Other RAL colours are available.

For more advice, please call our *Technical Support Team* on **01276 451555**.

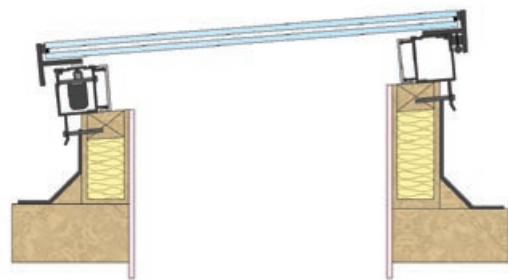
Astroglaze Electric Hinged Rooflight Benefits

Standard Glass Specification

- Standard glass specification: 30.8mm thick double glazed unit comprising a 6mm toughened outer pane, 18mm Argon filled cavity and a 6.8mm low-E laminated inner pane
- Fully concealed actuators also available



Standard Electric Hinged unit on builders kerb (closed)



Electric Hinged unit with Concealed actuators

Pyramids



Astroglaze Pyramids provide stylish, yet practical, rooflight solutions for a variety of spaces. These units will brighten up any educational, commercial or retail, property with natural light. Astroglaze self supporting Pyramids are designed to be installed to a weathered builder's kerb. All Pyramids are purpose made to suit variable overall kerb sizes, within a span range from 0.6m – 7m.

Key Features

- Faceted square and rectangular pyramids, in sizes from 0.6m to 7.0m spans
- Standard pitch is 30°, although any pitch from 22° to 45° can be accommodated
- Transom/glazing bar configuration can be specified within constraints of rooflight size and glazing sheet size
- Building Regulations Part L compliant design to achieve low U-values
- Frameworks and glazing bars are polyester powder coated aluminium extrusions as standard
- Non Fragile in accordance with British Regulations

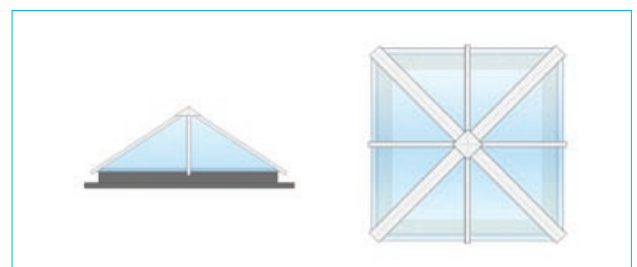
Astroglaze Pyramid Rooflight Benefits

Glazing Options

- Glass or polycarbonate glazing
- Standard specification for glass is 4mm or 6mm thick toughened outer layer, with a 16mm Argon filled cavity and a 6.8mm thick laminated inner layer with soft low-E coating
- Other options are available on request
- Polycarbonate glazing can be specified as solid or Multiwall, in Clear, Opal or 'Cool & Clear' for Solar Control
- Non-fragile versions are available



Pyramid unit on builders kerb for 600 - 1500mm span range



Pyramid unit on builders kerb for 1500 - 2000mm span range

Ridgelights



Astroglaze Ridgelights are a great way to bring daylight to indoor spaces. They are available with spans from 0.6m to 7.0m and in unlimited lengths.

Key Features

- Standard pitch is 30°, although any pitch from 22° to 45° can be accommodated
- Hipped and gable-ended designs can be accommodated
- Building Regulations Part L compliant design to achieve low U-value targets
- Frameworks and glazing bars are polyester powder coated aluminium extrusions as standard

For more advice, please call our **Technical Support Team** on **01276 451555**.

Astroglaze Ridgelight Rooflight Benefits

Glazing Options

- Glass or polycarbonate glazing
- Standard specification for glass is 4mm or 6mm thick toughened outer layer, with a 16mm Argon-filled cavity and a 6.8mm thick laminated inner layer with soft low-E coating
- Other options are available on request
- Polycarbonate glazing can be specified as solid or Multiwall, in Clear, Opal or 'Cool & Clear' for Solar Control
- Non-fragile versions are available



Northlights & Monopitch

For those north-facing spaces the range of standard and bespoke Northlights are specifically designed to maximise the natural daylight. They come in a range suitable for vertical to 60° sloping faces and with glazing or cladding tailored to suit. We also supply polycarbonate and glass Monopitch glazing to suit different roof applications.

Key Features

- Building Regulations Part L compliant design to achieve low U-value targets
- Frameworks and glazing bars are polyester powder coated aluminium extrusions as standard

Astroglaze Northlight and Monopitch Benefits

Glazing Options

- Glass or polycarbonate glazing

- Standard specification for glass is 4mm or 6mm thick toughened outer layer, with a 16mm Argon-filled cavity and a 6.8mm thick laminated inner layer with soft low-E coating

Other options are available on request

- Polycarbonate glazing can be specified as solid or multi wall, in Clear, Opal or 'Cool & Clear' for Solar Control
- Non-fragile options available

For more advice, please call our **Technical Support Team** on **01276 451555**.



Barrel Vaults



Astroglaze Barrel Vault rooflights come in a choice of low-rise and high-rise profiles and are perfect for all types of commercial, residential and industrial building. This highly adaptable unit can be installed on a range of roofing constructions.

Key Features

- Hi-rise (semi-circular) or low-rise profile barrel vault rooflights made to order with spans from 0.6m* to 13.0m, to any length
- Building Regulations Part L compliant design to achieve low U-value targets
- Frameworks and glazing bars are polyester powder coated aluminium extrusions as standard
- Barrel vault runs are terminated with either glazed gable ends, open ends or wall abutment

* Solid polycarbonate only. Smallest span for Multiwall polycarbonate is 1m.

For more advice, please call our **Technical Support Team** on **01276 451555**.

Astroglaze Barrel Vault Rooflight Benefits

Glazing Options

- Glazing can be specified as solid or Multiwall polycarbonate, in Clear, Opal or 'Cool & Clear' for Solar Control
- Glazing units are supplied as pre-assembled cassettes to be installed on site
- Non-fragile versions as standard

Astroglaze self supporting Barrel Vaults are designed to be installed to a weathered builder's kerb.

All Barrel Vaults are purpose made to suit variable overall kerb sizes, within a span range from 0.6m* to 13m and of any length.

Design Shapes: 1/8 1/5 1/2 Rise available.





more choice, better prices.

**Pyramid House
52 Guildford Road
Lightwater
Surrey
GU18 5SD**

Tel: 01276 451555
Fax: 01276 451533
Email: info@nationaldomes.com
www.nationaldomes.com



www.twitter.com/National_Domes



Important notes:
The responsibility for determining that any building component complies with the relevant Building Regulations rests solely with the client or specifier.
The National Domelight Company policy is one of continuous product improvement; accordingly we reserve the right to alter specifications without notice at any time.