



warmcore[®]
FOLDING SLIDING DOOR SYSTEM

QUICK SLIDE
WINDOWS & DOORS



TRUE INNOVATION - WARM ALUMINIUM

Quickslide are proud to introduce WarmCore, an innovative aluminium folding sliding door system which incorporates a radically different product design approach to deliver a new high performance fenestration framing solution: 'warm aluminium'.

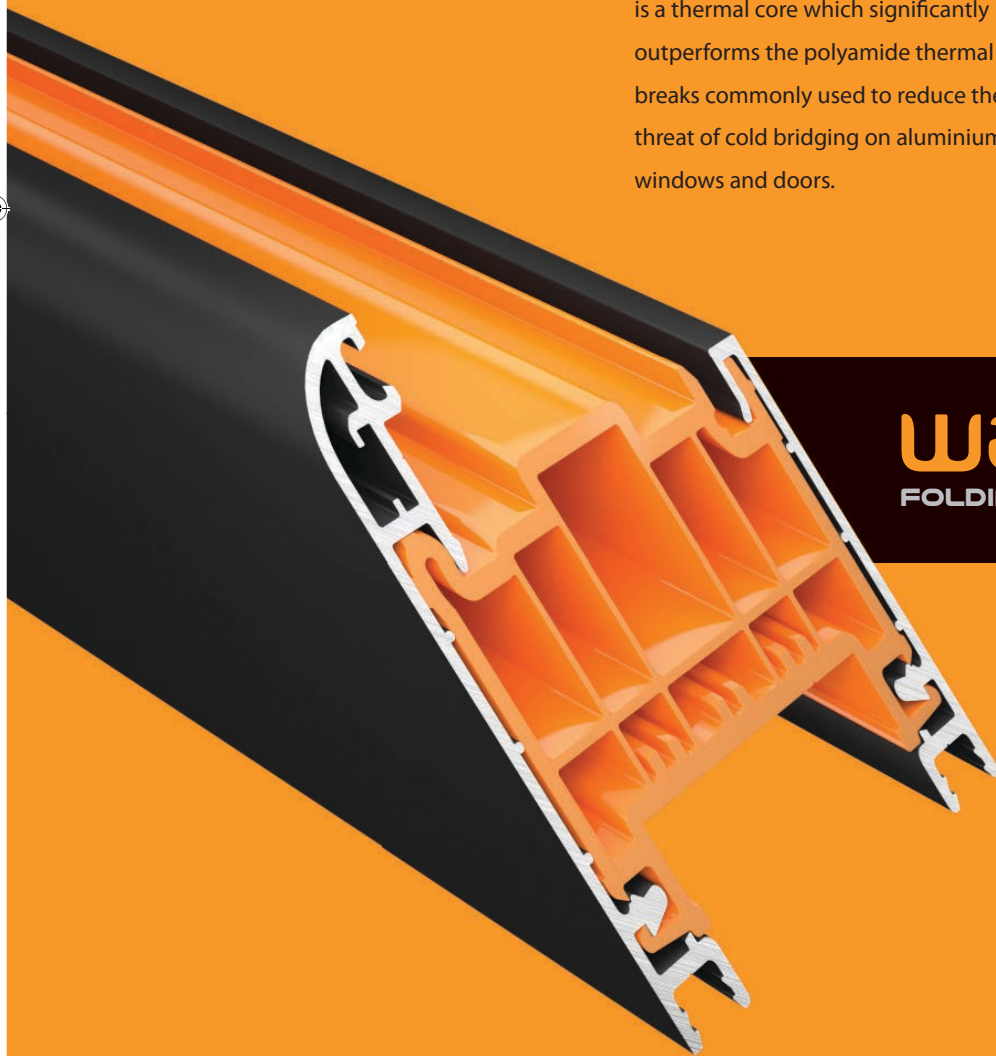
Designed from scratch starting with a clean sheet of paper, every single component has been concept sketched, detail designed, prototyped, tooled, trial installed and rigorously tested.

WarmCore is a high quality aluminium folding sliding door solution with peerless thermal performance that ensures end-user comfort, all year round.

SUPERIOR THERMAL PERFORMANCE

At the heart of WarmCore products is a thermal core which significantly outperforms the polyamide thermal breaks commonly used to reduce the threat of cold bridging on aluminium windows and doors.

The result is an innovative 'warm aluminium' frame construction, carefully dimensioned to provide an optimised 70mm front-to-back overall sash depth, while ensuring market-leading thermal performance thanks to the multi-chambered insulating core.



warmcore[®]
FOLDING SLIDING DOOR SYSTEM

Fully concealed multi-chambered cores substantially improve thermal performance when compared to thermally-broken aluminium doors:

**U-VALUE OF 1.4 W/M²K
WITH 28MM DOUBLE GLAZING**

**U-VALUE OF 1.0 W/M²K
WITH 44MM TRIPLE GLAZING**



The key to WarmCore's thermal performance is locked away inside



THE WARMCORE ADVANTAGE U-VALUE PERFORMANCE

1.8 W/m²K U-VALUE

Current Building Regulations Part L
requirements for replacement doors

1.94 W/m²K
U-VALUE
Competitor A

1.87 W/m²K
U-VALUE
Competitor B

1.85 W/m²K
U-VALUE
Competitor C

1.84 W/m²K
U-VALUE
Competitors D

1.83 W/m²K
U-VALUE
Competitor F

1.81 W/m²K
U-VALUE
Competitor G

1.77 W/m²K
U-VALUE
Competitor H

1.76 W/m²K
U-VALUE
Competitor I

1.6 W/m²K U-VALUE

Current Building Regulations Part L
requirements for replacement windows

2.0
WORSE

WarmCore has been designed from the ground up to offer market-leading thermal performance, protecting against future tightening of Building Regulations - Part L.

Using standard 28mm double glazing the WarmCore folding sliding door achieves a U-value of 1.5 W/m²K.

Upgrading the low-E glass gives an improved U-value of 1.4 W/m²K, while a U-value as low as 1.0 W/m²K is achievable using 44mm triple glazing.

The advantage against traditional aluminium doors is clear, with many struggling to meet current legislation.

1.4 W/m²K U-VALUE

with 28mm double glazing

WARMCORE

1.0 W/m²K U-VALUE

with 44mm triple glazing

WARMCORE

**0.9
BETTER**



Custom designed handle - suited to perfectly match the WarmCore hardware range



HI-TECH ELEGANCE

Precision-manufactured with a high quality surface finish and affording slim sightlines when installed, aluminium has become the material of choice for premium folding sliding door applications. WarmCore doors utilise a composite of materials to ensure an end product that is energy efficient and recyclable combined with the premium quality, structural integrity and architectural design elegance of aluminium to create a product perfect for both residential and commercial building applications.



From the rollers to the handles to the corner assemblies, WarmCore displays an elegance of design that translates into a high performance installed product that looks outstanding

WEATHER RESISTANCE

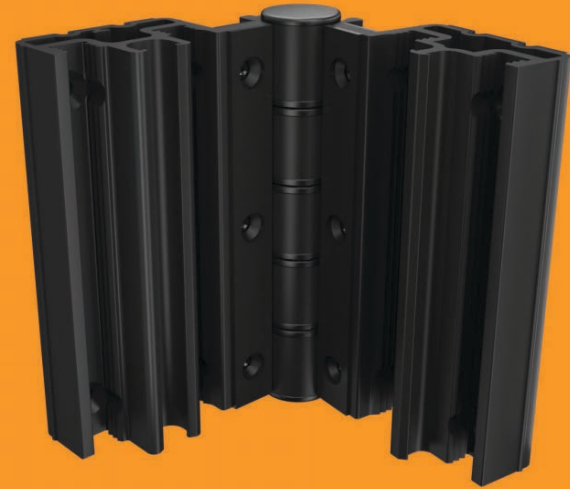
- o Folding sliding door leaves are triple-sealed to eradicate draughts and ensure excellent weathertightness
- o Best-in-class weathertightness for all-year-round user comfort
- o Gasket corner mouldings for sash-to-frame and sash-to-sash applications use a push-fit design to neatly and positively couple with straight-cuts for easy application, whilst avoiding any need to overrun gaskets to fill gaps between sashes



Bespoke union mouldings for gaskets helps WarmCore outperform the competition

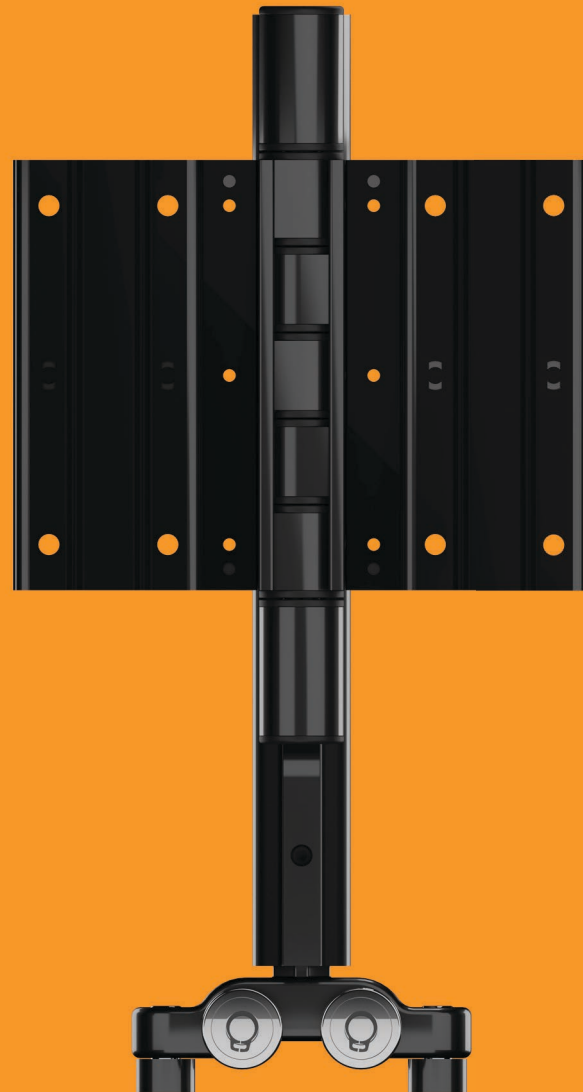
HIGH STRENGTH CONSTRUCTION

- o PAS24 and Secure By Design (SBD) compatibility as standard provides peace of mind for end users. WarmCore doors have been independently third party tested by a UKAS laboratory to prove impressive structural strength and security credentials
- o Double-strength sash corners are mechanically jointed and use a combination of internal aluminium cleats and a wrap-around corner moulding block to ensure secure rigidity and robustness in use
- o Custom-engineered extruded aluminium hinges are designed with security in mind
- o Hinges clip-fit for ease of on-site installation
- o Integral dog-bolt feature for high security
- o Multiple screw fixings are sited at the knuckle and in the main body
- o Run-through gasket grooves allow for continuous weather-seals
- o Robustly designed to take the weight of triple glazed units as standard
- o Custom-designed sash corner blocks cater for plain corner, shootbolt, roller casting and pivot hinge applications and these hardware components ensure high quality installation and operational performance
- o Added reassurance for both installers and homeowners is delivered by our custom-designed hardware development partners who underwrite and provide an ERA 'Five-Star' security guarantee against forced entry for a period of 10 years



High security self-locating hinge shown above

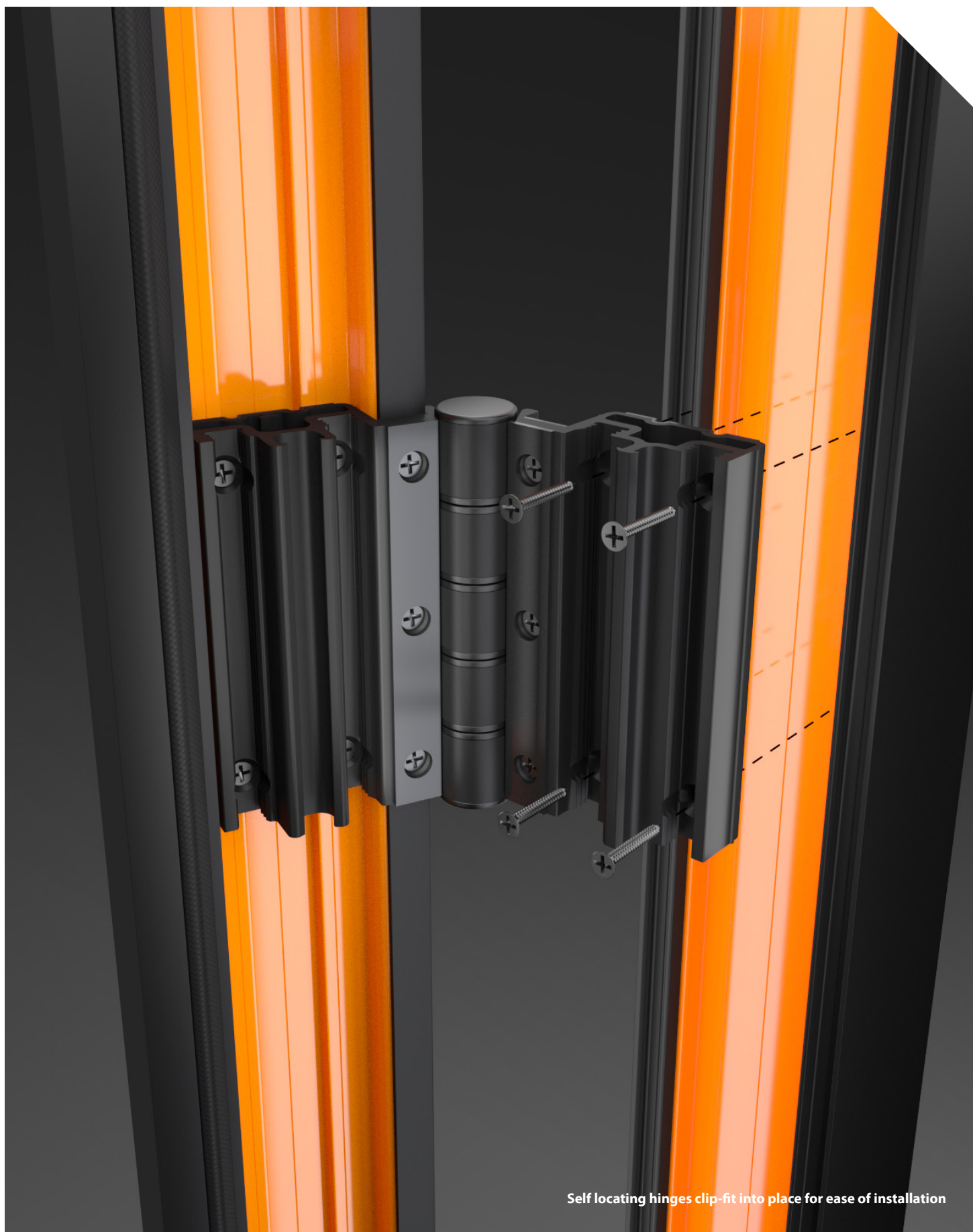
Double pivot roller shown below





Precision roller assembly ensures years of trouble free operation





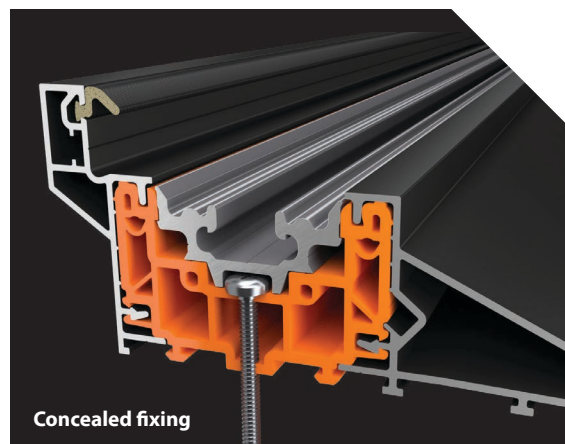
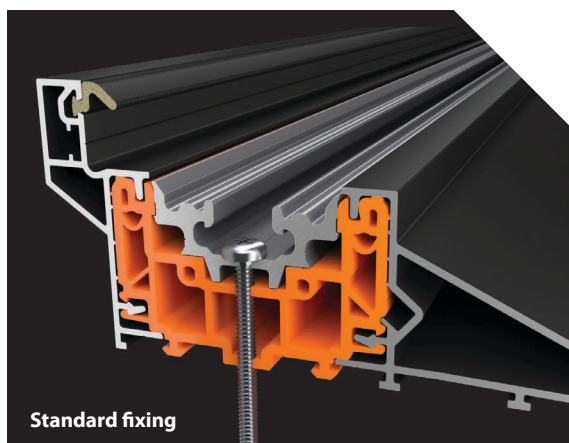
Self locating hinges clip-fit into place for ease of installation





EASE OF INSTALLATION

The WarmCore folding sliding door has been designed to be as fitter-friendly as possible. The innovative clip-in bead design makes it easy to glaze without the need for wedge gaskets and all round concealed fixings provide improved aesthetics. The clever aluminium track design also enables a quick all-in-one fitting procedure without the need for de-sashing, if required.



EASE OF ADJUSTMENT

To aid perfect trouble free installations plain hinges, pivot roller hinges and espag hinges provide +/- 1mm adjustment to cater for fine tolerances on site. Single roller and double 'pivot' rollers provide +/- 3mm vertical adjustment for precision installation.

Fast clip-in hinge adjustment packs allow for quick yet precise adjustment and fine-tuning on site.







warmcore[®]
FOLDING SLIDING DOOR SYSTEM

WarmCore 4 / 3 / 1





EXTERNAL STYLING

Four external aluminium designs deliver a range of classic aesthetic styles:

- Pencil round ¹
- Chamfered ²
- Square ³
- Decorative ⁴





GLAZING OPTIONS

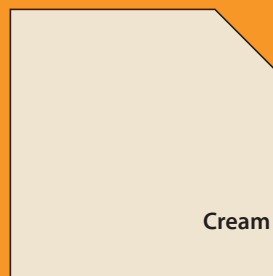
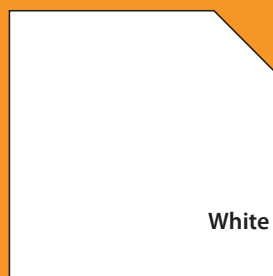
WarmCore doors can be glazed with 28mm double glazed units or 44mm triple glazed units.

Glazing can be carried out with a choice of aluminium beads for a neat internal finish:

- ¹ Square all round (horizontals and verticals)**
- ² Chamfered (option for verticals)**
- ³ Triple glazing uses 44mm TG bead all round (horizontals and verticals)**

COLOUR RANGE

Four aluminium colour finishes are readily available from stock, providing 16 possible colour configurations to sell straight from stock, including dual-colour options:



BI-FOLD, FRENCH AND RESIDENTIAL DOORS

Traditional French and residential doors can be constructed using the WarmCore system, in addition to a comprehensive range of folding sliding doors, including all the popular elevational configurations and stacking options. Doors up to six metres wide incorporating seven sashes can be specified. A midrail option is also available.



Residential door 1 / 0 / 1

MAX WIDTH: 6000MM
MAX OUTER FRAME HEIGHT: 2400MM
MAX SASH WIDTH: 1000MM
MAX LOAD PER SASH: 100KG



4 / 2 / 2

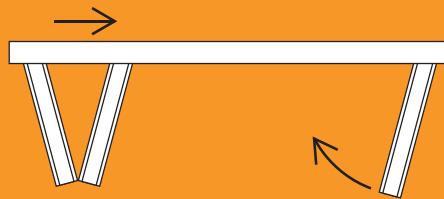


French door 2 / 1 / 1



3 / 2 / 1

How sliding folding door configurations work
Viewed from the outside



3 / 2 / 1

Total number of door leaves

Number of door leaves opening left

Number of door leaves opening right



7 / 4 / 3





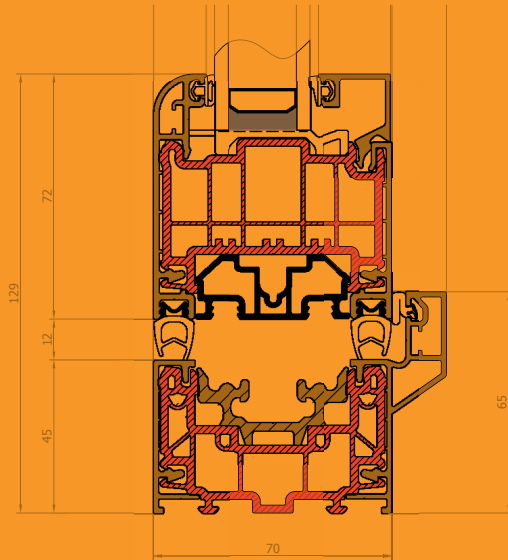
Low threshold detail



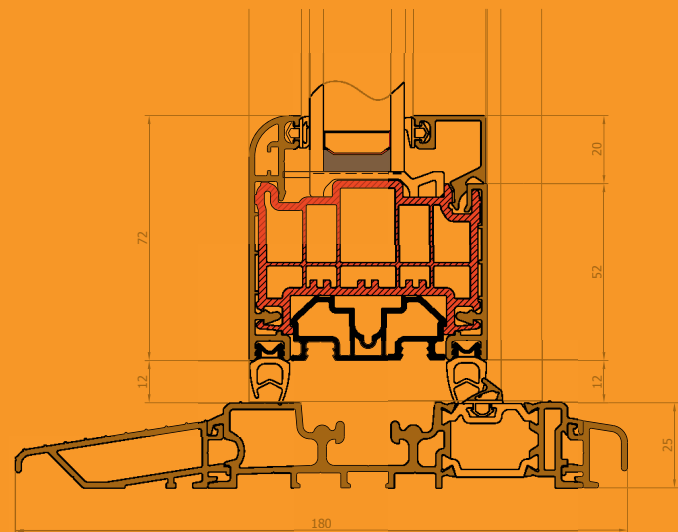
FLEXIBLE THRESHOLD OPTIONS

Sill options include a WarmCore standard threshold with integral sill, or standard threshold with an additional 150mm thermally-broken aluminium sill. The Part M compliant low threshold design is thermally-broken aluminium and optional ramps and cover trims can be used internally, externally or both, depending on requirements. This Part M compliant low threshold can also be installed without any ramps, so that flooring can be laid up to the edges of the threshold or the threshold can be neatly set into the floor to create a flush floor level through the doorway.

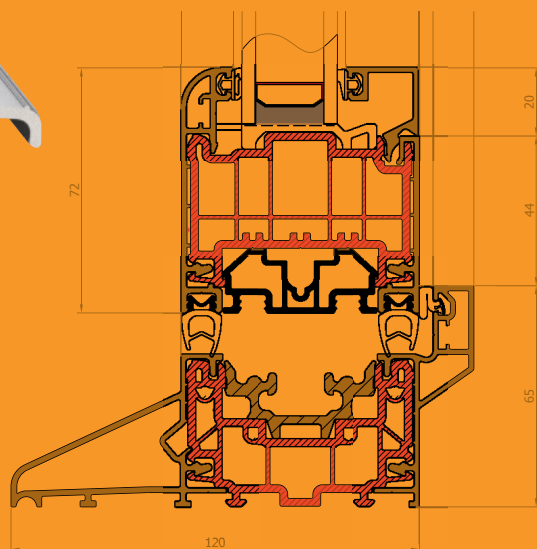
No sill



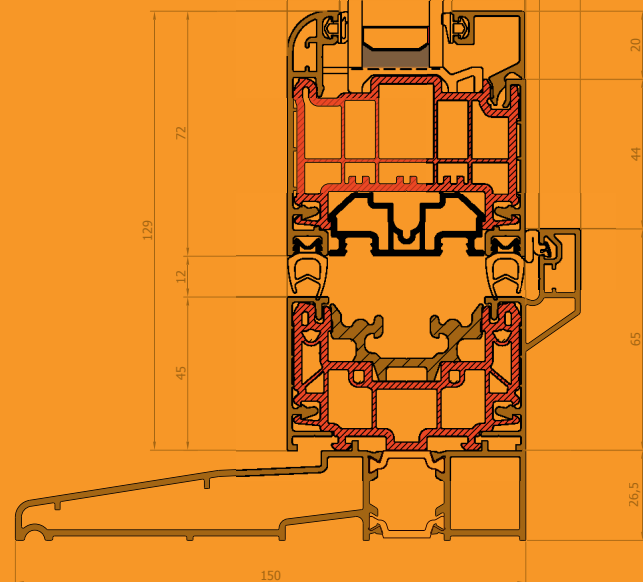
Part M compliant low threshold
(ramp/trim variant shown)



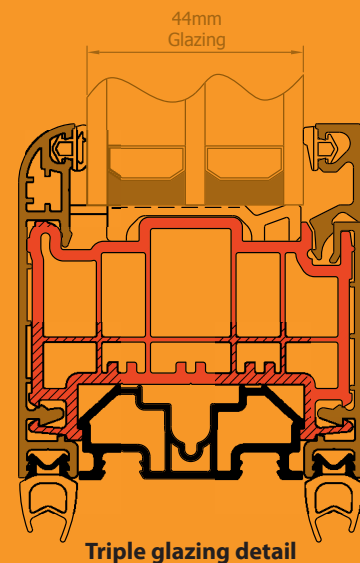
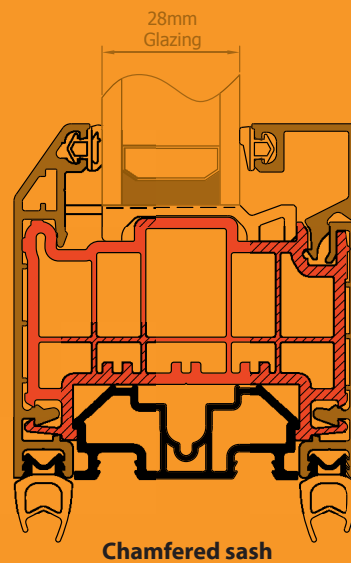
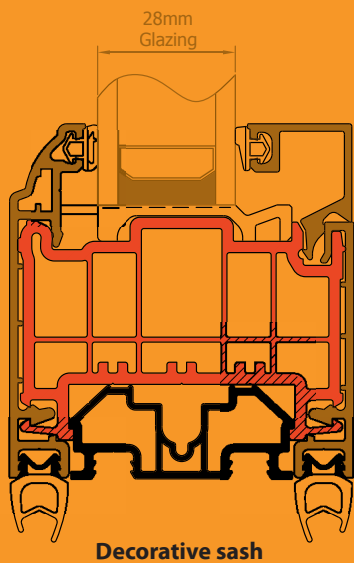
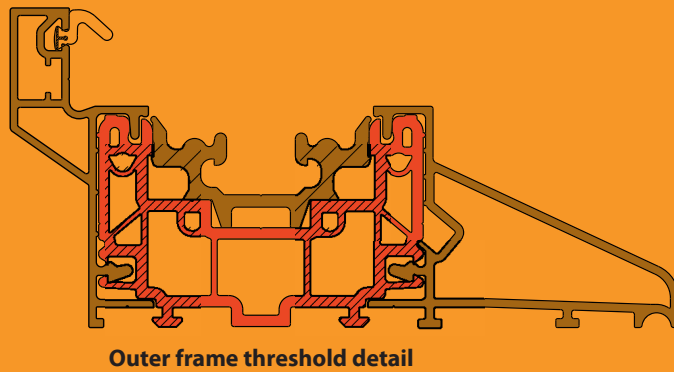
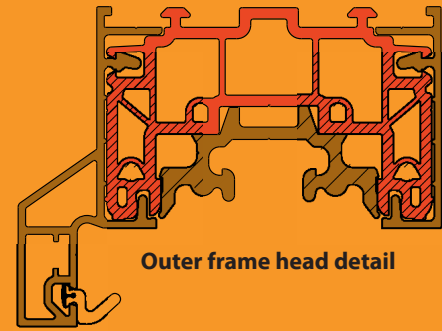
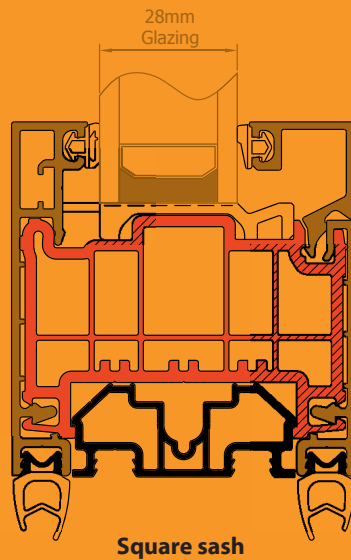
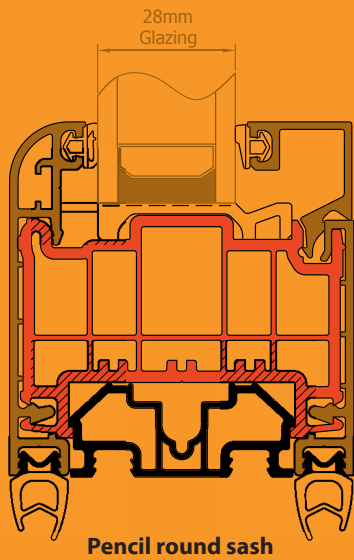
Integrated sill



150mm sill



WARMCORE KEY COMPONENTS



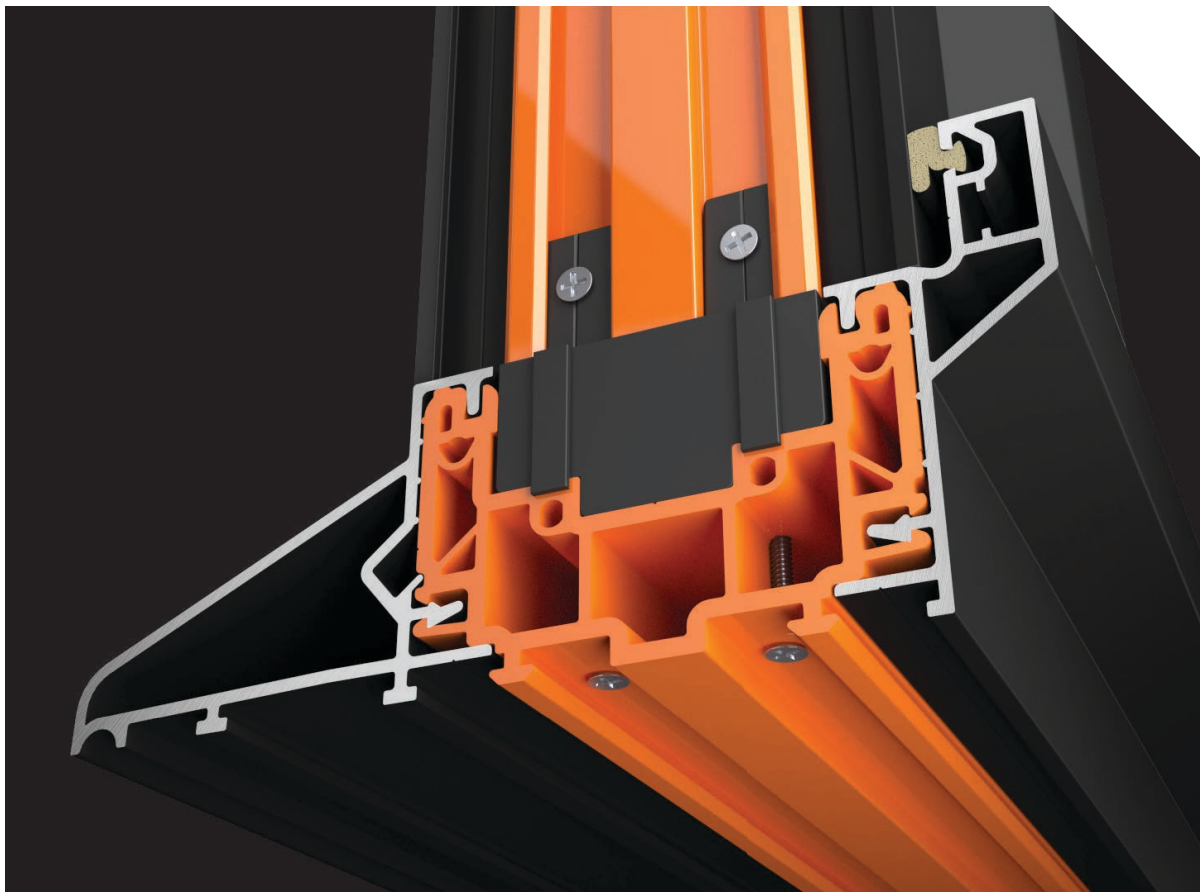


EFFICIENT TO FABRICATE

Internal and external aluminium profiles are integrated under high pressure onto the distinctive orange thermal core by the fabricator immediately prior to cutting to bar length. The aluminium profiles can be stocked in multiple colour options, giving the fabricator flexibility on colour combinations, while reducing stock holding requirements with minimal lead times for last-minute colour selections. With White, Cream, Black and Grey colour finishes, WarmCore gives 16 possible colour configurations, including dual-colour options.

WARMCORE IS DESIGNED TO MINIMISE STOCKHOLDING BUT MAXIMISE OPTIONS

Gasketed frames are easily manufactured using push-fit sash-to-frame and sash-to-sash corner mouldings, which positively engage with straight-cut gasket lengths.



QUICK SLIDE

WINDOWS & DOORS

Discover the Quickslide Difference

More than a decade ago, Quickslide were pioneers in developing a revolutionary window system that offered Sliding Sash Windows in PVCu. Now, nearly 500,000 windows on, our suite has massively evolved to incorporate several other equally inventive window and door solutions.

Every single Quickslide product you see has been meticulously designed and rigorously tested to ensure that it offers stunning aesthetic qualities and far exceeds the level of security and energy efficiency provided by the window or door it is replacing.

Producing quality products is our passion.



Attention to Detail

Quickslide continue to invest in sustained improvement. The detail, technical innovation and engineering ensure the quality of every single element is considered and assembled by our experienced tradesmen.



Manufactured for You

Every single window is manufactured to the exact size, and colour combination you require. No set or standard sizes, just what you want, when you want it.

An Eclectic and Expanding Range



From
£200

Sliding Sash Windows

Taking inspiration from the traditional timber box sash window design, the sliding sash window retains its period detailing and combines it with the modern benefits of UPVC.



From
£65

Casement Windows

For a window design that endures and has the versatility to suit both the contemporary residence and traditional abode you can't go wrong with a casement.



From
£500

Bespoke Windows

Every home has its own individual window requirements. We have the craftsmanship skills needed to produce windows in all manner of unique and lasting styles.



From
£198

PVCu Doors

Our maintenance-free UPVC doors won't just become a major focal point of the home looks-wise but they'll also offer outstanding energy efficiency and immense security.



From
£594

Composite Doors

Reliability is a key asset in any door and you get that in abundance with a composite door. Its toughness makes it a rock solid investment.



From
£974

Aluminium Bi-fold Doors

As they work in a concertina-like fashion our bi-fold doors enable you to create multiple different openings between the indoor and outdoor environments, doors with intelligence.



Quickslide Limited

Unit 15 Heaton Estate | Bradford Road
West Yorkshire | HD6 4BW

tel: 0844 5610 623

fax: 0844 5610 624

email: info@quickslide.co.uk

www.quickslide.co.uk

warmcore[®]
FOLDING SLIDING DOOR SYSTEM

QUICK SLIDE
WINDOWS & DOORS